

MONTHLY MEMBERSHIP PROGRESS REPORT

District 8 N

Results as of: 2/29/2020

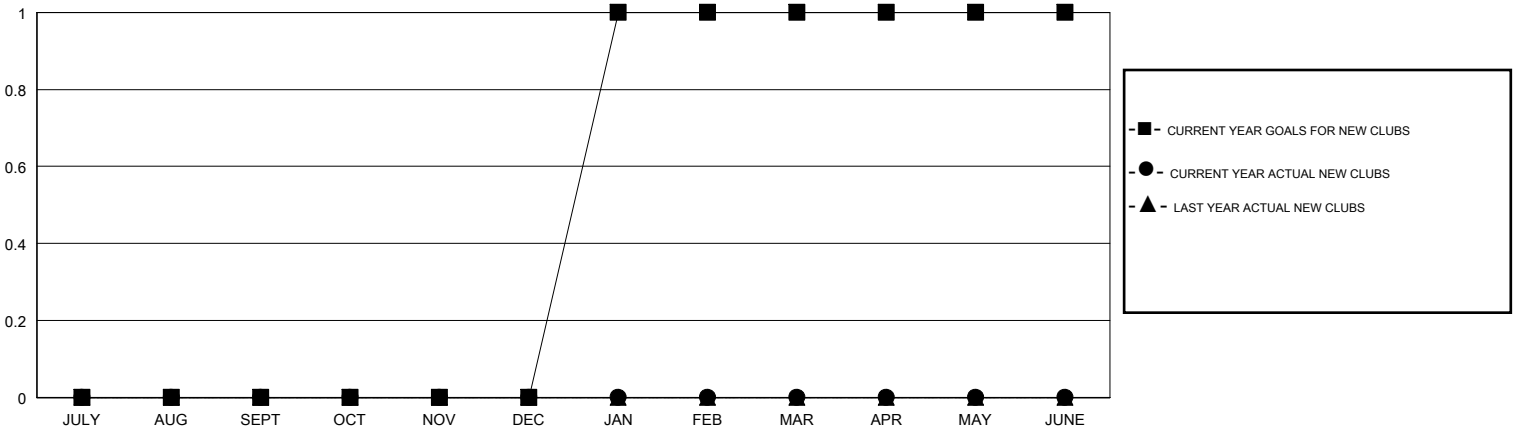
GMT:

LOCATION LOUISIANA

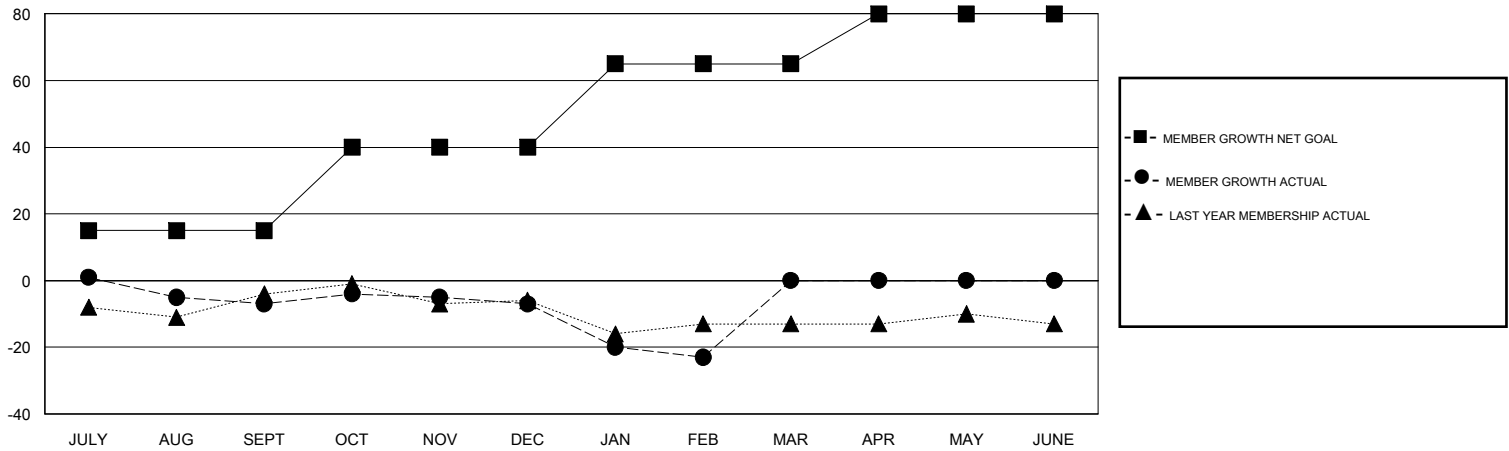
GMT CA

| Clubs | | | | Members | | | |
|-----------------------|---------------|-----------|---------------|-----------------------|------------------------|----------------------|--|
| RESULTS FOR 2019-2020 | | | | RESULTS FOR 2019-2020 | | | |
| QUARTER | NEW CLUB GOAL | NEW CLUBS | DROPPED CLUBS | QUARTER | MEMBER GROWTH NET GOAL | MEMBER GROWTH ACTUAL | DROPPED MEMBERS ACTUAL (including transfers) |
| JULY/AUG/SEPT | 0 | 0 | 0 | JULY/AUG/SEPT | 15 | 13 | 19 |
| OCT/NOV/DEC | 0 | 0 | 0 | OCT/NOV/DEC | 25 | 9 | 9 |
| JAN/FEB/MAR | 1 | 0 | 0 | JAN/FEB/MAR | 25 | 13 | 27 |
| APR/MAY/JUNE | 0 | 0 | 0 | APR/MAY/JUNE | 15 | 0 | 0 |

GOALS AND ACTUAL NEW CLUBS CUMULATIVE



GOALS AND ACTUAL MEMBERS CUMULATIVE



| | | |
|------------------------|---|------------------------------------|
| DROPPED CLUBS: 0 | 18 CLUBS OF 36 ADDED 1 OR MORE NEW MEMBERS | <u>GENDER DISTRIBUTION</u> |
| | | MALE 688 (73.74%) |
| | | FEMALE 245 (26.26%) |
| <u>DROPPED MEMBERS</u> | CLICK HERE FOR CUMULATIVE MEMBERSHIP DATA | TOTAL FAMILY UNIT MEMBERS 152 |
| DECEASED 6 | | FAMILY MEMBERS PAYING HALF DUES 80 |
| CLUB CANCELLED 0 | | |
| OTHER 49 | | |
| TOTAL 55 | | |